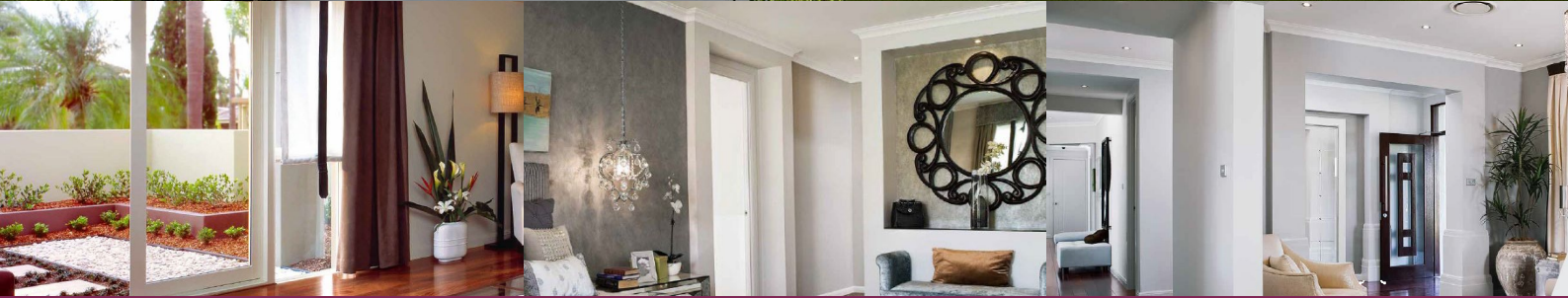


— THE —  
**ACRES**  
— WOLLONDILLY —



Total Area: 358.89 m<sup>2</sup> | House Width: 36.51m

5  2  2 

## Chisholm Lodge Grande

Cherry picking the best traditional elements of country style living, the Chisholm Lodge series adds a touch of old school glam to wide open spaces.

From stately dining and living rooms, to family friendly spaces and a home office, this series of homes are elegant and classic. Imagine entertaining family and friends, watching the sun sink below the horizon while enjoying an amazing meal in the dining room—without the distraction of a TV in the background. Then it's time to kick back with a bottle of red in the lounge while the kids play till their hearts content in the rumpus room.

The crowning glory of the home has to be the huge open plan kitchen with oversized island bench. Spilling onto the light filled conservatory (that opens up onto the optional alfresco), the transition from indoor to outdoor living is easy, perfect for those warmer months.



Masterton Homes  
sales@masterton.com.au  
1300 44 66 37

# \$579,750

(HOUSE PRICE ONLY)

### INCLUSIONS

- Carpet to bedrooms, home theatre, living room, guest bedroom, study, first floor living areas.
- Choice of Avala Hybrid Planks OR 500mm x 500mm floor tiles OR Laminate flooring in a selection of colours (refer to flooring plan).
- Fully ducted day/night zoning air-conditioning system (the size of the unit depends on the size of the base floor plan).
- 2700mm ceiling height to the ground floor only
- 3.5kW Solar PV System with Tier 1 Panels and a 3kW inverter.
- Smeg appliances (900mm freestanding cooker, curved glass or undermount rangehood, under bench dishwasher).

1300 487 226

THEACRES.COM.AU

Urban. Land Housing

THE  
**ACRES**  
 WOLLONDILLY



# Chisholm Lodge Grande Sherwood Facade



Masterton Homes  
 sales@masterton.com.au  
 1300 44 66 37

1300 487 226

THEACRES.COM.AU

Urban.Land Housing

\*Terms & Conditions: Images in this flyer depict land, landscaping and decorator items which are not supplied by Masterton and are not included in the price. Finishes to facades may show upgraded finishes which may not be included. Site costs may vary according to site classification, survey and site inspection, site conditions including rock and fill subject to building setback. Prices subject to Statutory Consenting Authority approval and specified conditions, bushfire requirements and acoustic report. Inclusions based on Ultimate Inclusions or Evolve Inclusions package unless otherwise specified. Where any item appears in more than one package or offer then the upgrade of that item will be supplied and no credits will be available. Masterton reserves the right to revise plans, specifications and pricing without notice. Please contact a Sales Consultant for more information. All plans and images are subject to copyright protection. The content is correct at time of printing and supersedes all previous versions published. Printed date 23/11/2024. Masterton Homes Pty Ltd - BLIC 35558C ABN 52 002 873 047