

THE
ACRES
WOLLONDILLY



Living Area: 324m² | Frontage: 25.86m

4  2  2 

Abruzzi 324

Elegant and opulent, the Abruzzi is the pinnacle of home design for acreage living. The sprawling 324.4m² single storey floor plan takes full advantage of the benefits of having a larger block to build upon, without being wasteful.

At the very heart of the Abruzzi sits a generous open plan living area from which all other areas of the home can be easily accessed. With an inbuilt butler's pantry, the kitchen also has a large breakfast bar, ideal for entertaining or when the school rush is on.

The open plan living area allows for ease of access to the alfresco dining area. And with a media room, study area and child's retreat, the Abruzzi has something for everyone.



Yousef Asic
Yousef.a@veronahomes.com.au
(02) 9053 4522

\$480,370

(HOUSE PRICE ONLY)

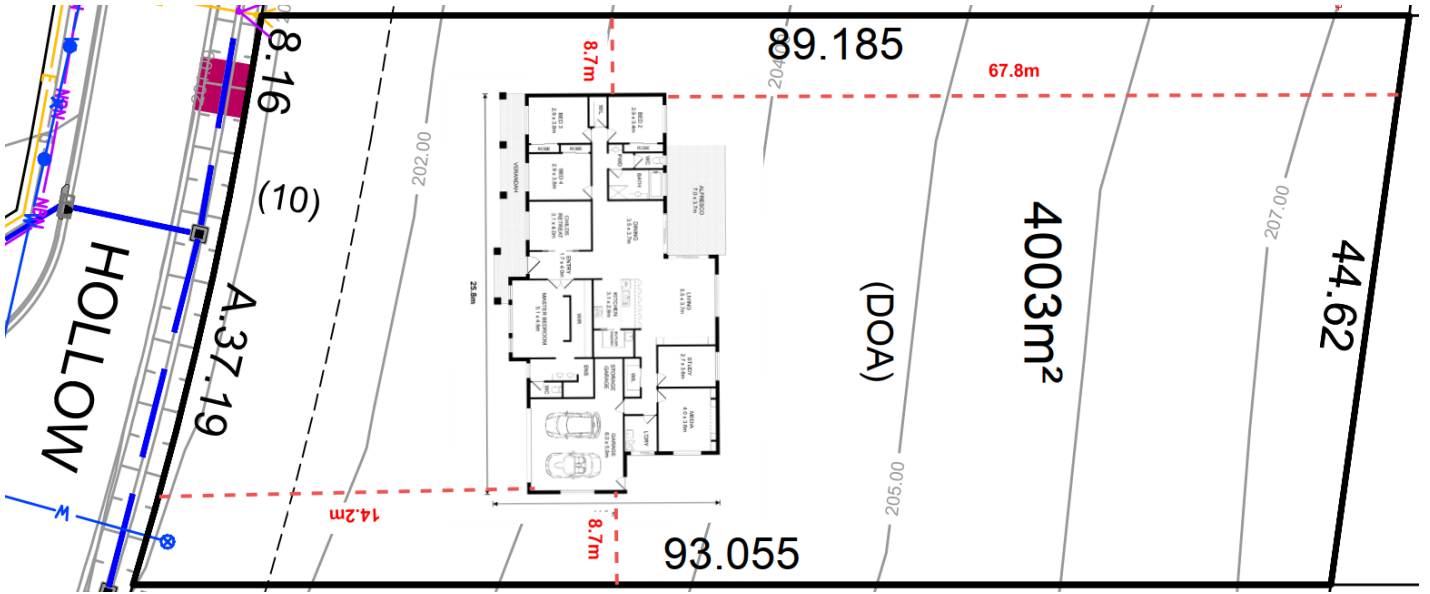
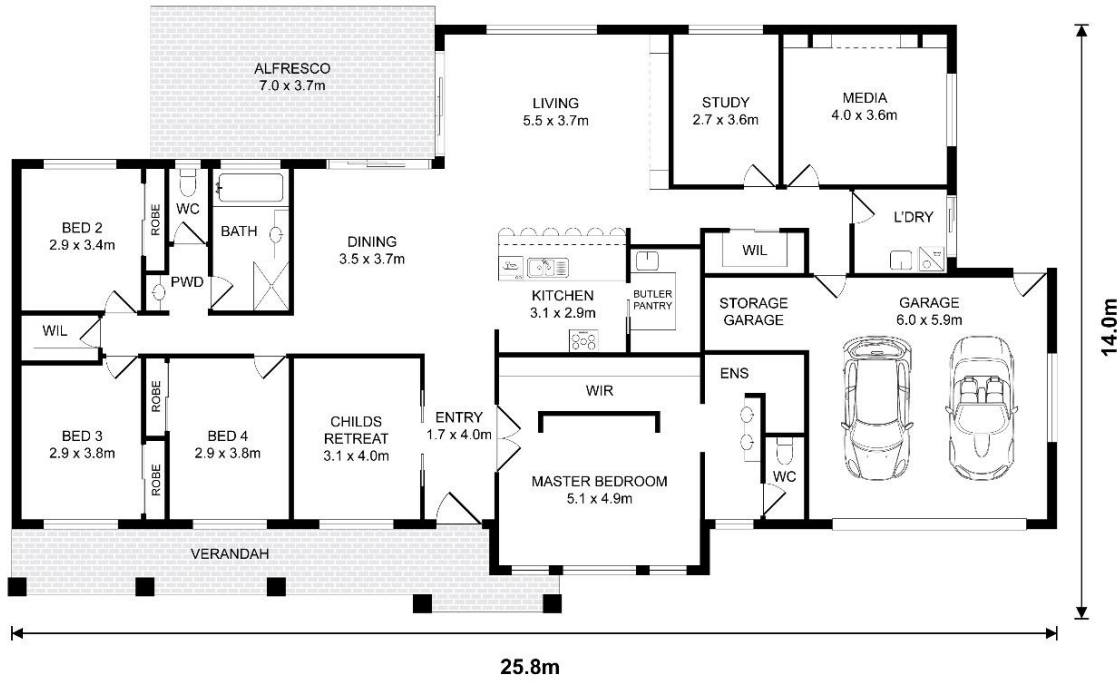
INCLUSIONS

- Site costs and BASIX
- Colorbond Roofing
- Ducted Airconditioning
- 20mm Reconstituted Stone Benchtops to Bathrooms and Kitchen
- 900mm Westinghouse Rangehood and all in one oven and Stove top
- Finger pull and Soft close kitchen Draws and Doors
- Quality Range of Ceramic tiles and Carpets
- Wall Hung Vanities to all Bathrooms and Ensuites
- Full Height tiling to Bathrooms and Ensuites
- Downlights throughout
- Plain concrete driveway up to 50m²

1300 487 226

THEACRES.COM.AU

THE
ACRES
WOLLONDILLY



Acreage



Yousef Asic
Yousef.a@veronahomes.com.au
(02) 9053 4522

1300 487 226

THEACRES.COM.AU