

— THE —
ACRES
— WOLLONDILLY —



Living Area: 307.6m² | To suit 30m frontage

4 2 2

The Retreat 33

A sophisticated and stylish design that offers the ultimate in luxurious family living, a beautiful home to relax and enjoy your perfect 5 star retreat.

The floorplan seamlessly flows throughout creating light filled harmonious spaces that are one with The Acres. You will love the attention to detail with a grand entry, stunning master suite with ensuite & walk-in robe, generous living areas and outdoor alfresco which have been created for functional family living & entertaining all year round.



Brolen Homes

Richard Zganiacz
richardz@brolenhomes.com.au
0477 022 154

\$490,640

(HOUSE PRICE ONLY)

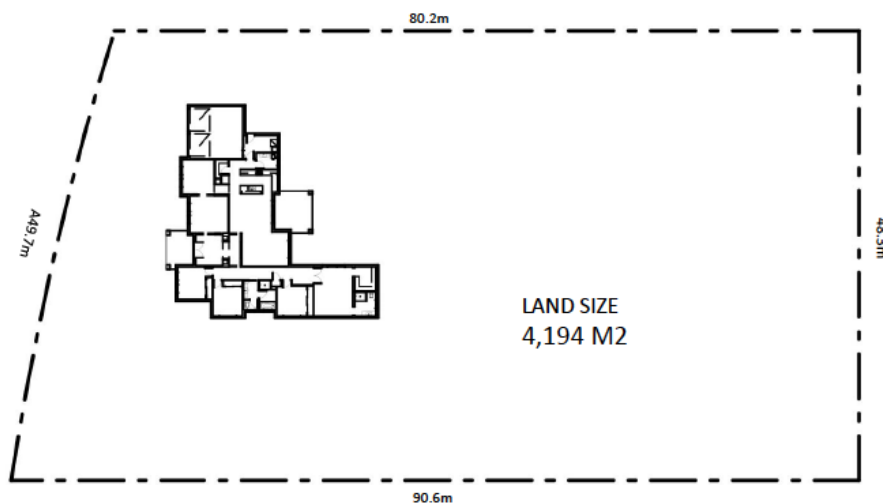
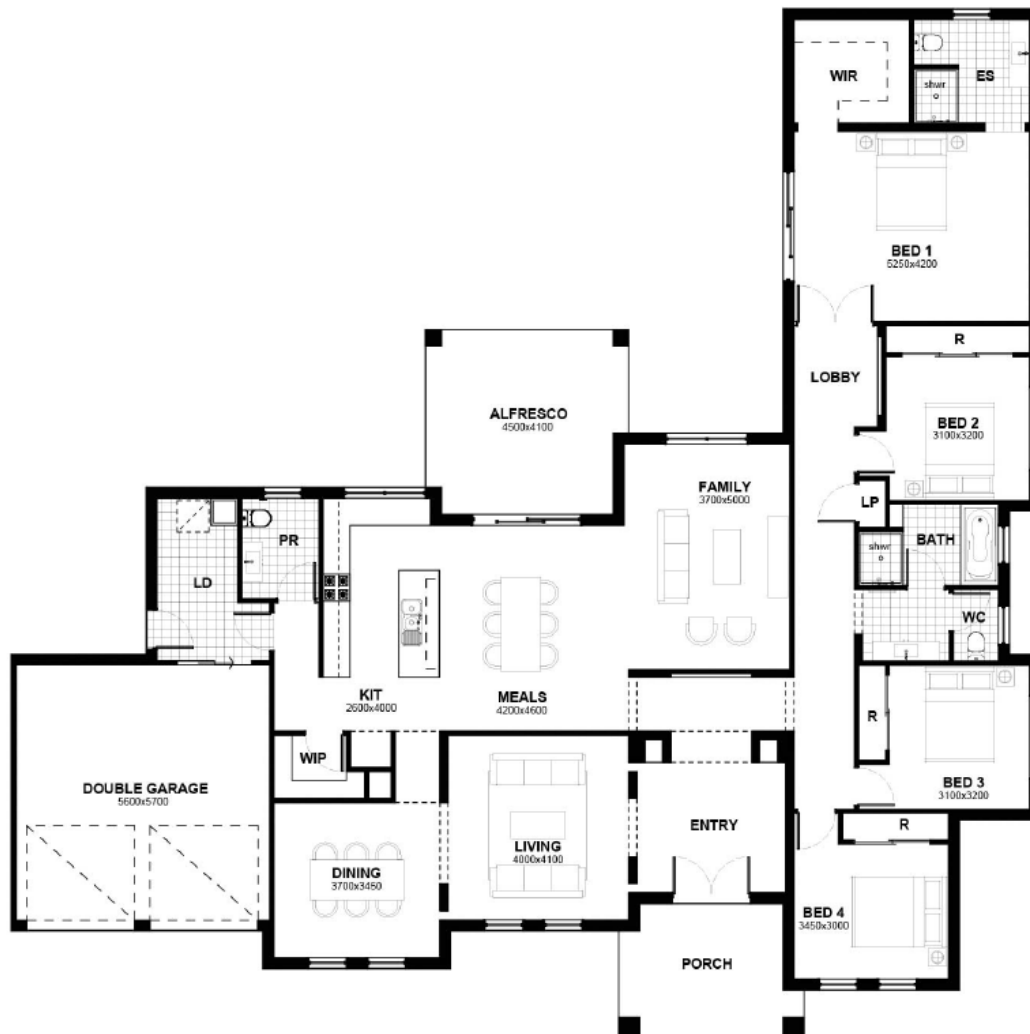
INCLUSIONS

- 20mm Caesarstone 'Standard Range' (200mm Pencil Edge) to kitchen benches & vanities
- 900mm Stainless Steel Appliances
- Soft close kitchen drawers & cupboards
- Tiles to main living areas, dining room and wet areas
- Carpets to bedrooms & living room
- Insulation to walls & ceilings
- 2590mm ceiling heights
- Standard Basix, Standard Site Costs & Standard Council Fees included
- Alarm System
- T2 Termite Resistant roof trusses & wall frames with 25 Year Guarantee
- 6 Year Structural Warranty

1300 487 226 | TheAcres.com.au

Disclaimer: The developer and all other related companies do not make any representations or give any warranties that the information set out in this document is or will remain accurate or complete at all times and they disclaim all liability for harm, loss, costs, or damage which arises in connection with any use or reliance on the information.

— THE —
ACRES
 — WOLLONDILLY —



The Retreat 33



Brolen Homes

Richard Zganiacz
 richardz@brolenhomes.com.au
 0477 022 154

1300 487 226 | TheAcres.com.au

Disclaimer: The developer and all other related companies do not make any representations or give any warranties that the information set out in this document is or will remain accurate or complete at all times and they disclaim all liability for harm, loss, costs, or damage which arises in connection with any use or reliance on the information.