

— THE —  
**ACRES**  
 — WOLLONDILLY —



Living Area: 350m | To suit 31m frontage

6 4 2

## The Grange III

Marksman Homes' pièce de résistance. A grand home of sheer elegance and refined detail designed for larger lots and acreage sites. As you turn into your driveway, you will forever marvel at the sheer elegance that is your new home, The Grange. From it's grand stature as you approach to the refined detail of the cathedral ceiling and panoramic windows, this home has features that will enchant. Having timeless façade options, 6 bedrooms, 4 bathrooms, and open plan living makes The Grange is the perfect home for your family and lifestyle.



Estrella Jones  
 estrella@marksmanhomes.com.au  
 42715200

**\$489,900**

(HOUSE PRICE ONLY)

### INCLUSIONS

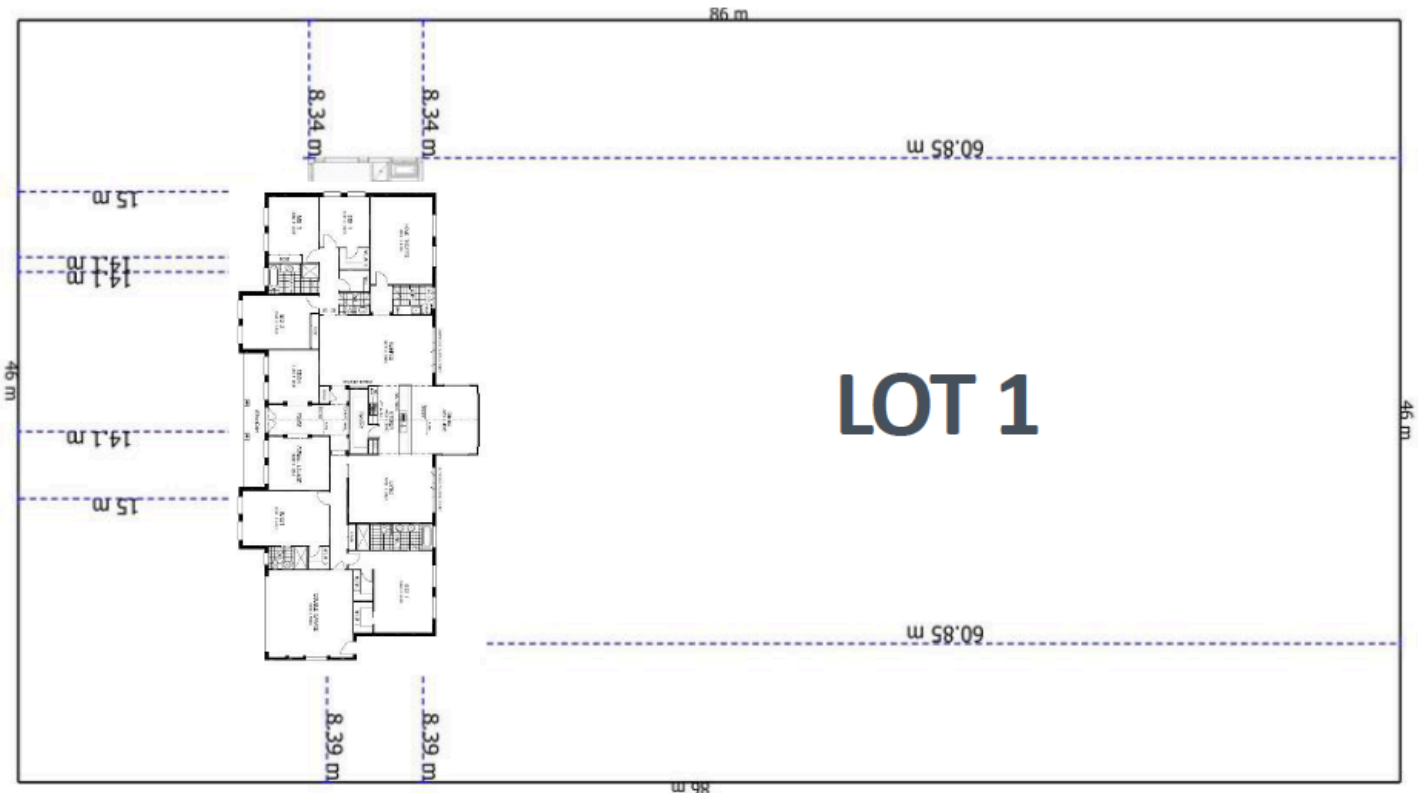
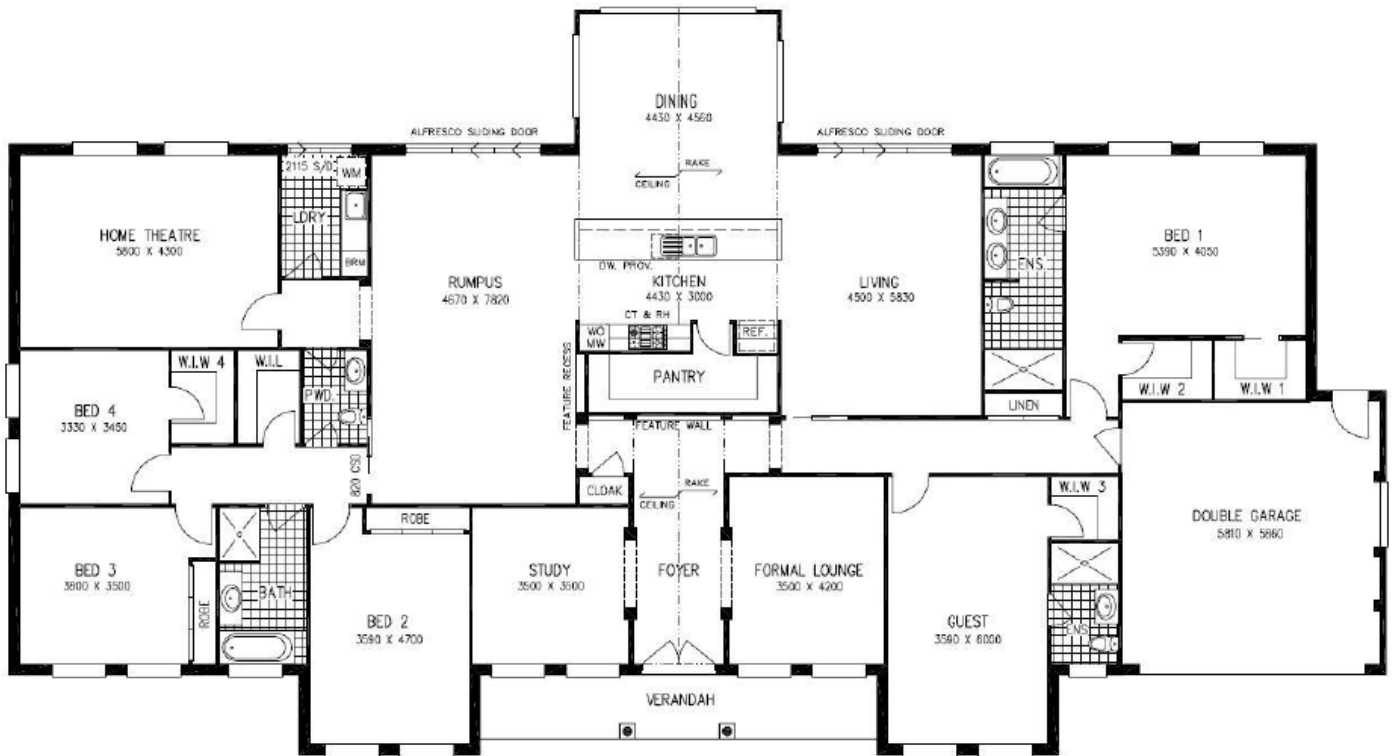
- Standard Cathedral ceiling to dining only.
- Standard 9 foot High ceilings throughout home.
- 5 Bedrooms, 1 Study, Home Theatre,
- Formal Lounge and much more
- Free Site Inspection on Standard designs.
- Fixed price tender.
- 25 Years Structural Guarantee.
- Free Colorbond roof upgrade.
- And much more.
- Contact Marksman Homes for further
- Quality Inclusions.

**1300 487 226 | TheAcres.com.au**

Disclaimer: The developer and all other related companies do not make any representations or give any warranties that the information set out in this document is or will remain accurate or complete at all times and they disclaim all liability for harm, loss, costs, or damage which arises in connection with any use or reliance on the information.

# THE ACRES

WOLLONDILLY



## The Grange III



Estrella Jones  
[estrella@marksmanhomes.com.au](mailto:estrella@marksmanhomes.com.au)  
 42715200

1300 487 226 | [TheAcres.com.au](http://TheAcres.com.au)

Disclaimer: The developer and all other related companies do not make any representations or give any warranties that the information set out in this document is or will remain accurate or complete at all times and they disclaim all liability for harm, loss, costs, or damage which arises in connection with any use or reliance on the information.