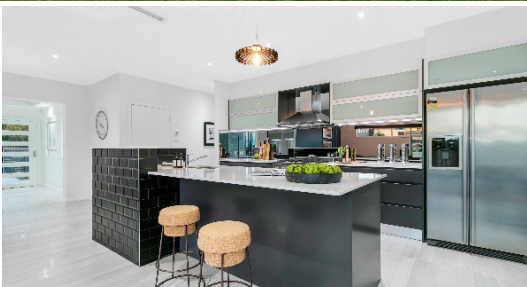


— THE —
ACRES
— WOLLONDILLY —



Living Area: 238.10m² | To suit 35m frontage

4 2 2

Fairmont 33

An imposing country manor

From the impressive front porch entry with feature ceiling bulkhead, formal living to the left, study to the right, you'll feel welcome. This magnificent home revolves around the family meals area with two-way access to the covered alfresco, perfect for entertaining. There's a designer kitchen with an abundance of bench space and huge walk in pantry. Centrally featured is the generous home theatre. You'll be blown away by the resort style master suite with lavish 'Hers n His' twin robes and ensuite. Everything about the Fairmont says spacious.



Larna Mladineo
Larna.Mladineo@kurmondhomes.com.au
0400 441 468

\$434,060

(HOUSE PRICE ONLY)

INCLUSIONS

- Upgraded Diamond Elite Inclusions;
- 40mm Stone Kitchen benchtop with waterfall edge
- Polyurethane Kitchen cabinets
- Smeg Appliances Including Dishwasher and Microwave
- 2750mm high ceilings
- ACTRON ducted air conditioning
- Tiled Alfresco
- 1200mm entry door
- Porcelain Floor Tiles*
- 2340mm high decorative internal doors
- And much more...

*refer to our Everyday Diamond Inclusions and Diamond Elite Upgrade Package for more details

1300 487 226 | TheAcres.com.au

Disclaimer: The developer and all other related companies do not make any representations or give any warranties that the information set out in this document is or will remain accurate or complete at all times and they disclaim all liability for harm, loss, costs, or damage which arises in connection with any use or reliance on the information.

Disclaimer: The developer and all other related companies do not make any representations or give any warranties that the information set out in this document is or will remain accurate or complete at all times and they disclaim all liability for harm, loss, costs, or damage which arises in connection with any use or reliance on the information.